

fisherbrand



# Rockers, Rotators and Mini Shakers

# Contents

Mini tube rotator	3
Digital CO <sub>2</sub> and humidity resistant bottle/tube roller	4
Nutating mixer - variable speed	5
Nutating mixer - fixed speed	6
3D Platform rotator	7
Multi-function 3D rotator	8
Multi-purpose tube rotator	9
Multi-platform shaker	10-11
Microplate shaker	12
Incubating microplate shaker	13
Incubating mini shaker	14
Heating and cooling PCR shaker	15
Heating and cooling mini shaker	16
Open air rocker	17
Wave motion shaker	18
Wrist shakers (fixed and variable speed)	19

# Mini tube rotator

Fisherbrand™ mini tube rotators accommodate 1.5mL to 50mL tubes. Adjustable digital speed control and agitation mode allow for a wide variety of applications.

## Applications

- The mini tube rotator can be utilised across a broad spectrum of scientific disciplines including but not limited to molecular biology, clinical, and biochemistry

## Features

- Small footprint fits easily into refrigerators and non-CO<sub>2</sub> incubators
- Digital rpm display
- Quiet operation

- Paddles are easily adjustable/interchanged - each paddle can be adjusted from 0 to 90°
- Achieve more effective mixing with 'agitation' mode. Agitation will occur at every 40 degrees in the rotation cycle. The combination of rotation and oscillation provides more effective mixing
- Extra paddles are needed if using all same size tubes (except for 50mL, when only one can be accommodated anyway), e.g. if using all 5mL tubes, then order one extra pack of 2 x 5mL/7mL paddles

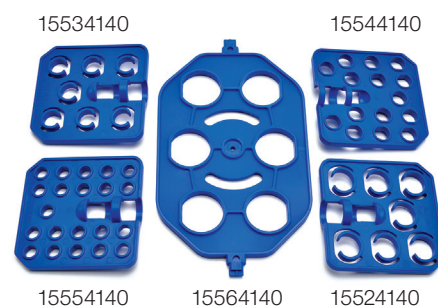


## Specification and ordering information

Cat. No	15534080
Plug type(s)	EU, UK, CN
Electrical	100 to 240V, 0.1A, 2.5W, 50/60Hz
Speed range	10 to 40rpm
Speed accuracy	±1rpm
Operation temperature	5 to 60°C
Maximum capacity	84 x 0.5mL/0.8mL tubes, 60 x 1.5mL/2.0mL tubes, 28 x 5mL/7mL tubes, 28 x 10mL/15mL tubes, 6 x 50mL tubes
Unit includes	2 x 10/15mL paddles, 2 x 5mL/7mL paddles, 2 x 1.5mL/2mL paddles, 1 x 50mL paddle

## Optional accessories

Cat. No	Description
15554140	Two paddles for 0.5mL/0.8mL tubes
15544140	Two paddles for 1.5mL/2mL tubes
15534140	Two paddles for 5mL/7mL tubes
15524140	Two paddles for 10mL/15mL tubes
15564140	Paddle for 50mL tubes



## Two year warranty

Certification: CE and cCSAus

# Digital CO<sub>2</sub> and humidity resistant bottle/tube roller

Sleek and compact bottle/tube roller is capable of rolling multiple sizes of tubes or bottles. Adjustable digital speed control accommodates a variety of applications.

## Applications

- Cell culture
- Hybridisation assays
- Bioproduction

## Features

- Anti-corrosive and wear resistant construction enables use in humid and CO<sub>2</sub> environments
- Adjustable rollers accommodate a variety of tube/bottle sizes
- Stacking kit allows you to stack units two high, saving valuable bench space
- Optional remote control facilitates operating unit while in incubator and adds timer function
- Includes O-rings for smooth rolling of 15mL or 50mL tubes



## Specification and ordering information

Cat. No	15376617
Plug type(s)	EU, UK, CN
Electrical	100 to 240V, 50/60Hz
Speed range	1 to 80rpm
Operation temperature	4 to 60°C
Maximum capacity	11 rollers
Maximum bottle diameter	120mm
Unit includes:	Six rollers

## Optional accessories

Cat. No	Description
15386617	Additional rollers (pack of two)
15316627	Stacking kit
15326627	Remote control
15396617	O-rings for 50mL tubes (20 rings per pack), 23.5mm x 3.55mm
15306627	O-rings for 15mL tubes (20 rings per pack), 13.2mm x 2.65mm

Two year warranty

Certification: CE and cCSAus

# Nutating mixer - variable speed

The Fisherbrand nutating mixer delivers gentle uniform mixing of fluids in tubes, plates, culture flasks and dishes.

## Applications

- Cell culture

Sample preparations such as:

- DNA/RNA sample preparation
- Genome sequencing

## Features

- Variable speed from 2 to 60rpm offers gentle continuous mixing of samples
- Generous 305mm x 267mm platform accommodates a variety of tubes and vessels

- Display will show last used settings, even after power has been turned off
- Operating temperature range 5°C to 40°C, usable in non-CO<sub>2</sub> incubators, refrigerators and chambers
- Continues to run by last set speed and the remaining time when the power is recovered
- Continuous or timed operation with automatic switch-off
- Audible and visual alarm when the set time reaches zero



## Specification and ordering information

Cat. No	15594070
Plug type(s)	EU, UK, CN
Electrical	100 to 240V, 1A, 9.5W, 50/60Hz
Speed range	2 to 60rpm
Speed accuracy	±1rpm
Tilt angle	20°
Timer	0 min. to 99h 59min.
Maximum capacity	0.8kg
Shipping weight	6kg
Display	LED
Tray material	Aluminium
Tray dimensions (l x w)	306mm x 266mm
Overall dimensions (l x w x h)	415mm x 293mm x 273mm
Unit includes	Dimpled rubber mat and six tube securing bands

**Two year warranty**

**Certification: CE and cCSAus**

# Nutating mixer - fixed speed

The Fisherbrand nutating mixer delivers gentle uniform mixing of fluids in tubes, plates, culture flasks and dishes.

## Applications

- Cell culture
- DNA/RNA analysis
- Genome sequencing
- Other microbiology applications

## Features

- Budget friendly design
- Easy to use, plug-and-play operation

- Fixed-speed movement at 20° angle
- Operating temperature range 5°C to 40°C, usable in non-CO<sub>2</sub> incubators, refrigerators and chambers
- Fixed speed of 18 or 20rpm (Voltage dependent)



## Specification and ordering information

Cat. No	15584070
Plug type(s)	EU, UK, CN
Electrical	220V, 50Hz, 0.05A, 11W
Speed	18rpm
Speed accuracy	±1rpm
Tilt angle	20°
Timer	0 min. to 99h 59min.
Maximum capacity	0.8kg
Shipping weight	6kg
Display	LED
Tray material	Aluminium
Tray dimensions (l x w)	306mm x 266mm
Overall dimensions (l x w x h)	415mm x 293mm x 273mm
Unit includes	Dimpled rubber mat and six tube securing bands

## Two year warranty

Certification: CE and cCSAus

# 3D Platform rotator

The Fisherbrand 3D platform rotator provides smooth orbital motion for mixing in culture flasks, dishes, plates and tubes.

## Applications

- Cell culture
- DNA/RNA analysis
- Genome sequencing
- Agglutination
- Extraction
- Gel staining/destaining

## Features

- Simple speed adjustment from 2 to 80rpm
- Gentle movement ideal for staining gels

without destroying the edges or keeping fragile tissue intact during incubation

- Large platform accommodates most commonly used vessels with non-slip mat to prevent sample movement
- Low voltage power supply provides safe cold room operation and low energy consumption
- Operating temperature range of 5°C to 40°C allows for use in refrigerators or non-CO<sub>2</sub> incubators
- Continuous or timed operation with automatic switch-off
- Display will show last used settings, even after power has been turned off



## Specification and ordering information

Cat. No	15504080
Plug type(s)	EU, UK, CN
Electrical	100 to 240V, 0.8A, 6.5W, 50/60Hz
Speed range	2 to 80rpm
Speed accuracy	±1rpm
Fixed angle	7°
Timer	0 min. to 99h 59min.
Maximum capacity	0.8kg
Shipping weight	6kg
Display	LED
Tray material	Aluminium
Tray dimensions (l x w)	306mm x 266mm
Overall dimensions (l x w x h)	415mm x 293mm x 170mm
Unit includes	Dimpled rubber mat and six tube securing bands

**Two year warranty**

**Certification: CE and cCSAus**

# Multi-function 3D rotator

The Fisherbrand multi-function 3D rotator provides flexibility in motion to include rotating, reciprocal rotating, and vibration.

## Applications

- Immune precipitations, affinity matrix, trypsinisation, gel staining and destaining, antibody staining, washes, hybridisations, Southern blots, Western blots

## Features

- Rotation speed: 5 to 100rpm for long wave motion
- Reciprocal rotation: 0 to 360° turning angle for long and medium wave motion

- Vibration: 0 to 5° turning angle, programmable in bursts of 0 to 5 seconds, for short wave motion
- Operating temperature range of 5°C to 40°C allows for use in refrigerators or non-CO<sub>2</sub> incubators
- Continuous or timed operation with automatic switch-off
- Display will show last used settings, even after the power has been turned off



## Specification and ordering information

Cat. No	15514080
Plug type(s)	EU, UK, CN
Electrical	100 to 240V, 0.1A, 5W, 50/60Hz
Speed range	5 to 100rpm
Speed accuracy	±1rpm
Turning angle (reciprocal mode)	0 to 360°
Turning angle (vibration mode)	0 to 5°
Tilt angle	7°
Orbit diameter	23mm
Timer (orbital/360° vertical or reciprocal mode)	0 to 250 sec.
Timer (vibration mode)	0 to 5 sec (vibration) with 0 to 125 cycles
Operating temperature	5°C to 40°C
Maximum capacity	1kg
Display	LED
Platform dimensions (working area) (d x w)	306mm x 266mm
Overall dimensions (l x w x h)	415mm x 293mm x 225mm
Unit includes	Dimpled rubber mat and six tube securing bands

**Two year warranty**

**Certification: CE and cCSAus**



# Multi-purpose tube rotator

The Fisherbrand multi-purpose tube rotator offers flexibility with multiple carousel options, adjustable speed, and an angled head for added versatility.

## Applications

- Cell culture
- DNA/RNA analysis
- Genome sequencing
- Other microbiology applications

## Features

- Digital microprocessor control

- Six carousel options for maximum versatility
- Adjustable speed from 5 to 80rpm
- Adjustable angled head offers mixing angles from 95 to 180°
- Timer features both time-up and time-down counting modes
- Display will show last used settings, even after power has been turned off

## Specification and ordering information

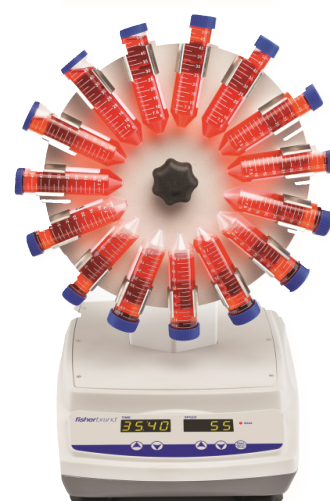
Cat. No	15524080
Plug type(s)	EU, UK, CN
Electrical	100–240V, 0.2A, 8W, 50/60Hz
Speed range	5 to 80rpm
Speed accuracy	±1rpm
Carousel angle	95 to 180° (Six steps: 95°, 112°, 129°, 146°, 163°, 180° )
Carousel capacity	50 x 9mm to 11mm tubes (1.5mL/2mL), 30 x 14mm to 18mm tubes (15mL), 15 x 27mm to 34mm tubes (50mL), 10 x 10mL to 15mL and 20 x 5mL to 7mL tube, 64 x 18.5mm tubes (drum carousel), 64 x 14mm tubes (drum carousel)
Timer	0 min. to 99h 59min.
Display	LED
Carousel material	Aluminium
Carousel dimensions	Tube carousel diameter 290mm, drum tube carousel diameter 310mm
Overall dimensions (l x w x h)	415mm x 293mm x 464mm
Unit includes	15 place tube carousel for 50mL tubes

## Optional accessories

Cat. No	Description
15554090	50 place tube carousel for 1.5/2.0mL tubes
15584090	10 and 20 place tube carousel for 10mL to 15mL and 5mL to 7mL tubes
15594090	64 place drum tube carousel for 14mm diameter tubes
15564090	30 place tube carousel for 15mL tubes
15504100	64 place drum tube carousel for 18.5mm diameter 15mL to 20mL tubes
15574090	15 place tube carousel for 50mL tubes

## Two year warranty

Certification: CE and cCSAus



# Multi-platform shaker

The Fisherbrand multi-platform shaker has a smooth orbital shaking action and a wide variety of optional accessories for multiple applications.

## Applications

- Biomedical or biopharmaceutical labs, cultivation of cells, extracting, dissolving slow reacting samples, tissue culture or analytical diagnostics, rotating closed containers for dialysis, bacterial growth

## Features

- Variable shaking speed 50 to 450rpm
- 4.5kg weight capacity
- Automatic load balancing system
- Continuous or timed operation with automatic switch-off
- Maximum flexibility with many options of interchangeable accessories
- Simple set up and easy operation
- Display will show last used settings, even after power has been turned off
- Low voltage power supply permits safe cold room operation and low energy consumption
- Operating temperature range of 5 to 40°C permits use in cold rooms, refrigerators or non-CO<sub>2</sub> incubators



## Specification and ordering information

Cat. No	15594060
Plug type(s)	EU, UK, CN
Electrical	110-240V
Speed range	50 to 450rpm
Speed accuracy	±1rpm
Orbit	10mm
Timer	0 min. to 99h 59min.
Operating temperature	+5°C to 40°C
Maximum capacity	4.5kg (6 x 250mL flasks)
Display	LED
Tray dimensions (l x w)	310mm x 284mm
Overall dimensions (l x w x h)	415mm x 293mm x 120mm
Unit includes	Aluminium platform
Required accessories (see next page)	Choose from flask clamps, bottle holders, universal platform with adjustable bars, tube racks, or flat platform with non-slip rubber mat

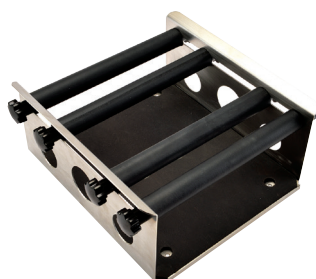
Note: Not for use in CO<sub>2</sub> incubators. Will void warranty.

## Required accessories for multi-platform shaker

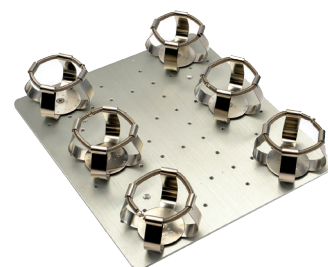
Cat. No	Description	Maximum quantity on a platform	Pack qty
15564100	Stainless steel clamps for 25mL flasks	20	1
15574100	Stainless steel clamps for 50mL flasks	20	1
15584100	Stainless steel clamps for 100mL flasks	8	1
15594100	Stainless steel clamps for 250mL flasks	8	1
15504110	Stainless steel clamps for 500mL flasks	6	1
15514110	Stainless steel clamps for 1000mL flasks	4	1
15524110	Stainless steel clamps for 2000mL flasks	2	1
15534110	Stainless steel clamps for 3000mL flasks	2	1
15544110	Stainless steel clamp for 5000mL flasks	1	1
15564110	Clamp for 500mL infusion bottle	5	1
15574110	Clamp for 1000mL infusion bottle	5	1
15584110	Funnel clamp	2	1
15703808	Fixed tube rack for 12 x 30mm diameter (50mL) tubes	2	1
15793798	Fixed tube rack for 27 x 22mm diameter (25mL) tubes	2	1
15594110	Fixed tube rack for 40 x 14mm diameter tubes	2	1
15504120	Fixed tube rack for 40 x 16mm diameter tubes	2	1
15783798	Fixed tube rack for 40 x 18mm diameter (15mL) tubes	2	1
15733808	Adjustable tube rack for 12 x 30mm diameter (50mL) tubes	2	1
15723808	Adjustable tube rack for 27 x 22mm diameter (25mL) tubes	2	1
15514120	Adjustable angle tube rack for 40 x 14mm diameter tubes	2	1
15524120	Adjustable angle tube rack for 40 x 16mm diameter tubes	2	1
15713808	Adjustable tube rack for 40 x 18mm diameter (15mL) tubes	2	1
15524100	Flat platform with non-slip rubber mat	1	1
15534100	Platform with clamps for 6 x 250mL flasks/150mL beakers	1	1
15544100	Platform with clamps for 12 x 100mL flasks/150mL beakers	1	1
15554100	Universal platform with adjustable bars	1	1
15534120	Universal (aluminium) platform	1	1
15514100	Non-slip rubber mat	1	1
15554110	Sticky mat 140mm x 140mm	4	1
15544120	96-well microplate holder	5	1



Adjustable tube racks (sold separately)



Universal platform with adjustable bars



Platform with clamps

**Two year warranty**

**Certification: CE and cCSAus**

# Microplate shaker

The Fisherbrand microplate shaker is designed for consistent shaking results and precise temperature control.

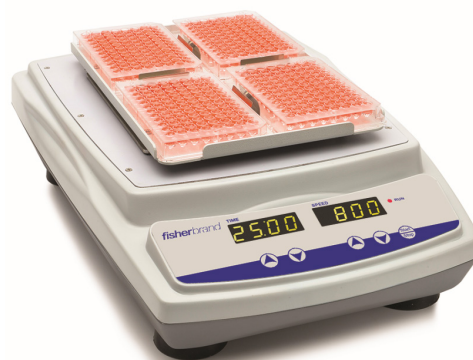
## Applications

- Life science, immunoassay, ELISA plates, staining cells for flow cytometry, plates in cold room

## Features

- Capable of shaking up to four microplates in one run
- Variable shaking speed: 150 to 1000rpm
- Quick and easy fitting of up to four standard size microplates

- Continuous or timed operation, with automatic switch off
- Display will show last used settings, even after power has been turned off
- Operating temperature of 5 to 40°C permits use in refrigerators, cold rooms and non-CO<sub>2</sub> incubators
- Optional rack accessories also permit unit to be used for shaking tubes



## Specification and ordering information

Cat. No	15504070
Plug type(s)	EU, UK, CN
Electrical	100-240V, 0.2A, 19W, 50/60Hz
Speed range	150 to 1000rpm
Speed accuracy	±1rpm
Timer	0 min. to 99h 59min.
Operation temperature	+5°C to 40°C
Orbit	2.5 mm
Display	LED
Maximum capacity	2kg
Tray dimensions	320mm x 260mm
Overall dimensions (l x w x h)	415mm x 293mm x 143mm
Unit includes	Four-place microplate clamps on aluminium platform

## Optional accessories

Cat. No	Description
15875911	Large platform and clamps for six microplates
15855911	Large platform for 2 x tube racks or 6 x 96-well microplates
15865911	Holder for 96-well microplates
15594110	Fixed tube rack for 40 x 14mm diameter tubes
15504120	Fixed tube rack for 40 x 16mm diameter tubes
15783798	Fixed tube rack for 40 x 18mm diameter (15mL) tubes
15793798	Fixed tube rack for 27 x 22mm diameter (25mL) tubes
15703808	Fixed tube rack for 12 x 30mm diameter (50mL) tubes
15514120	Adjustable tube rack for 40 x 14mm diameter tubes
15524120	Adjustable tube rack for 40 x 16mm diameter tubes
15713808	Adjustable tube rack for 40 x 18mm diameter (15mL) tubes
15723808	Adjustable tube rack for 27 x 22mm diameter (25mL) tubes
15733808	Adjustable tube rack for 21 x 30mm diameter (50mL) tubes



Adjustable tube racks (sold separately)

**Two year warranty**

**Certification: CE and cCSAus**

# Incubating microplate shaker

Fisherbrand incubating microplate shakers are designed for simultaneously incubating and shaking up to four standard microplates.

## Applications

- Immunoassays
- Hybridisations

## Features

- Variable speed microprocessor control provides consistent, uniform shaking action
- Easy-to-use controls allow users to adjust temperature in 1°C increments
- Permanently lubricated ball-bearings and maintenance free, brushless DC motor provide reliable service and continuous duty operation
- Touchpad controls with easy-to-read, LED displays for temperature, speed and time
- Timer with continuous or timed modes
- Temperature calibration provides accurate temperature control
- Unit can also be used to shake and incubate tubes with appropriate accessories

## Specification and ordering information

Cat. No	15564070
Plug type(s)	EU, UK
Electrical	200-240V, 50/60Hz
Temperature range	Ambient +5 to 65°C (lowest 10°C)
Operating temperature	+5°C to +40°C
Temperature uniformity	±1°C at 37°C
Speed range	150 to 1200rpm
Speed accuracy	±2%
Timer	1s to 9999 min.
Orbit	3mm
Display	LED
Maximum capacity	Four microplates/two microtube racks (1kg load max.)
Tray dimensions (l x w)	270mm x 186mm
Overall dimensions (l x w x h)	415mm x 290mm x 348mm
Total weight	21kg
Unit includes	Aluminium tray with four microplate clamps, transparent cover, EU & UK plugs

## Accessories

Cat. No	Description	Pack qty
15865911	96-well microplate clamps	4
15534090	Transparent top cover with three holding screws	1
15554080	1.5mL/2.0mL microtube rack	1
15564080	15mL centrifuge tube rack	1
15574080	50mL centrifuge tube rack	1
16248420	Screws for tube racks	4
16258420	Screws for transparent cover	3
16268420	Screws for microplate clamps	2
15564120	Power cable EU plug	1
15574120	Power cable UK plug	1



*includes transparent cover*

Two-year warranty

RoHS, WEEE, CE Mark

# Incubating mini shaker

These versatile Fisherbrand incubating mini shakers are designed to heat and shake a variety of vessels, including tubes, flasks or microplates.

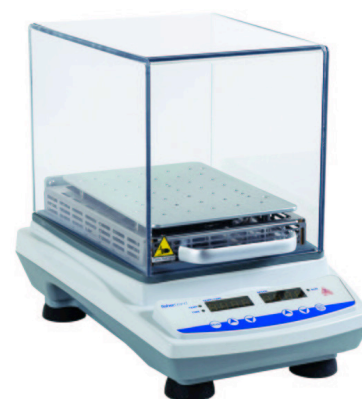
## Applications

- Cell cultures
- Bacterial suspensions
- Hybridisations

## Features

- Variable speed microprocessor control provides consistent, uniform shaking action

- Easy-to-use controls allow users to adjust temperature in 1°C increments
- Permanently lubricated ball-bearings and maintenance free, brushless DC motor provide reliable service and continuous duty operation
- Touchpad controls with easy-to-read, LED displays for temperature, speed and time
- Timer with continuous or timed modes
- Temperature calibration provides accurate temperature control
- Accessories available for varied applications



## Specification and ordering information

Cat. No	15554070
Plug type(s)	EU, UK
Electrical	200-240V, 50/60Hz
Temperature range	Ambient +5 to 65°C (lowest 10°C)
Operating temperature	+5°C to +40°C
Temperature uniformity	±1°C at 37°C
Speed range	150 to 1200rpm
Speed accuracy	±2%
Timer	1s to 9999 min.
Orbit	3mm
Maximum capacity	3.6kg (≤500rpm), 1kg (500-1200rpm)
Display	LED
Tray dimensions (l x w)	250mm x 180mm
Overall dimensions (l x w x h)	415mm x 290mm x 348mm
Total weight	21kg
Unit includes	Aluminium platform, transparent cover, EU & UK plugs
Required accessories	Choose from flask clamps, tube racks, microplate holder or sticky mat

## Accessories

Cat. No	Description	Pack qty
15554080*	Rack for 1.5mL/2.0mL microtubes	1
15564080*	Rack for 15mL centrifuge tubes	1
15574080*	Rack for 50mL centrifuge tubes	1
15534090	Top transparent cover with three screws	1
15554110*	Sticky mat	1
15564100*	Clamp for 25mL flasks	1
15574100*	Clamp for 50mL flasks	1
15584100*	Clamp for 100mL flasks	1
15594100*	Clamp for 250mL flasks	1
15544120*	Holder for 96 well microplates	1
16248420	Screws for tube rack or microplate holder	4
16258420	Screws for transparent cover	3
15564120	Power cable EU plug	1
15574120	Power cable UK plug	1

Two-year warranty

RoHS, WEEE, CE Mark

\*At least one of these must be purchased to use the unit

# Heating/cooling PCR shaker

Fisherbrand PCR shakers have two PCR blocks ready installed without the need for additional accessories, and are ideal for analyses that requires a stable, controlled temperature.

## Applications

- PCR, ligations and ELISA
- Cell and bacterial cultures
- Hybridisations
- Enzyme reactions

## Features

- Variable speed microprocessor control provides consistent, uniform shaking action
- Easy-to-use controls allow users to adjust temperature in 1°C increments
- Permanently lubricated ball-bearings and maintenance free, brushless DC motor provide reliable service and continuous duty operation
- Touchpad controls with easy-to-read, LED displays for temperature, speed and time
- Programmable for several temperature points with three pre-set cooling rates
- Temperature calibration provides accurate temperature control



## Specification and ordering information

Cat. No	15574070
Plug type(s)	EU, UK
Electrical	200-240V, 50/60Hz
Operating temperature	+5°C to +40°C
Temperature range	Ambient -10°C to 95°C (lowest 5°C)
Temperature uniformity	±0.5°C at 37°C
Speed range	150 to 1200rpm with PCR plate
Speed accuracy	±2% (up to 300rpm), ±5% (301-1200rpm)
Timer	1s to 9999 min.
Orbit	3mm
Display	LED
Maximum capacity	Two PCR plates
Platform material	Aluminium
Platform dimensions (l x w)	162mm x 109mm
Overall dimensions (l x w x h)	415mm x 290mm x 307mm
Total weight	22kg
Unit includes	Two PCR blocks, transparent cover, EU & UK plugs

## Accessories

Cat. No	Description	Pack qty
15544090	Top transparent cover with four screws	1
16278420	Spare screws for transparent cover	4
15564120	Power cable EU plug	1
15574120	Power cable UK plug	1

Two-year warranty

RoHS, WEEE, CE Mark

# Heating/cooling mini shaker

Fisherbrand incubating/cooling mini shakers are designed for shaking various samples whilst heating or cooling. This unit comes with three clamps already installed to hold two microplates, with optional modular blocks that can also accommodate microtubes, centrifuge tubes, vials, or culture tubes. Ideal for analyses that requires a stable, controlled temperature.



## Applications

- Cell and bacterial cultures
- Hybridisations
- Enzyme reactions

## Features

- Variable speed microprocessor control provides consistent, uniform shaking action
- Easy-to-use controls allow users to adjust temperature in 1°C increments
- Permanently lubricated ball-bearings and maintenance free, brushless DC motor provide reliable service and continuous duty operation
- Touchpad controls with easy-to-read, LED displays for temperature, speed and time
- Timer with continuous or timed modes
- Temperature calibration provides accurate temperature control
- Accessories available for varied applications and tube types

## Specification and ordering information

Cat. No	15544080
Plug type(s)	EU, UK
Electrical	200-240V, 50/60Hz
Temperature range	Ambient -10°C to 65°C (lowest 5°C)
Temperature uniformity	±0.5°C at 37°C
Speed range	150 to 1200rpm with microplates, 150 to 600rpm with modular blocks
Speed accuracy	±2% (up to 300rpm), ±5% (301-1200rpm)
Timer	1s to 9999 min.
Orbit	3mm
Display	LED
Maximum capacity	Two microplates/modular blocks (1.9kg)
Platform material	Aluminium
Platform dimensions (l x w)	186mm x 145mm
Overall dimensions (l x w x h)	415mm x 290mm x 307mm
Total weight	22kg
Unit includes	Three microplate clamps, transparent cover, EU & UK plugs
Optional accessories	Modular tube block(s)

## Accessories

Cat. No	Description	Pack qty
15584080	Block for 20 x 1.5mL microcentrifuge tubes	1
15594080	Block for 20 x 2.0mL microcentrifuge tubes	1
15504090	Block for 12 x 15mL centrifuge tubes	1
15514090	Block for 5 x 50mL conical bottom centrifuge tubes	1
15524090	Block for nine 20mm diameter tubes	1
15865911	Clamps for 96 well microplate	4
15544090	Transparent cover with four screws	1
16278420	Spare screws for transparent cover	4
16288420	Spare screws for modular blocks	4
16268420	Spare screws for microplate clamps	2
15564120	Power cable EU plug	1
15574120	Power cable UK plug	1

Two-year warranty

RoHS, WEEE, CE Mark



# Open air rocker

Fisherbrand open air rockers are ideal for cell culture work and can be used in a variety of environmental conditions.

## Applications

- Staining and destaining gels, hybridisation procedures, haematology and blotting techniques

## Features

- The microprocessor control provides electronic tilt angle adjustment which allows the user to easily adjust rocking angle from 1 to 15° while unit is operating. Precise speed control provides smooth, low-speed rocking motion down to 1rpm
- Display will show last user settings, even after power has been turned off
- Touchpad controls with easy-to-read, LED displays for speed, tilt angle, and time. Timer will display elapsed time or, when programmed, will shut off unit when time reaches zero
- Audible and visual signals will activate when system detects an obstruction or overload of the tray
- Slowly increases speed to desired set-point to avoid splashing
- Usable in refrigerators, cold rooms or non-CO<sub>2</sub> incubators, maximum 80% relative humidity, non-condensing



## Specification and ordering information

Cat. No	15514070
Plug type(s)	EU, UK, CN
Electrical	100 to 240V , 0.1A, 13.5W, 50/60Hz
Tilt angle	1 to 15° (adjustable in 1° increments)
Speed range	1 to 50rpm
Speed accuracy	±1rpm
Timer	1s to 9999 min.
Operation temperature	+5°C to 40°C
Maximum capacity	4.5kg
Shipping weight	6kg
Display	LED
Tray material	Aluminium
Tray dimensions (l x w)	306mm x 266mm
Overall dimensions (l x w x h)	415mm x 293mm x 142mm
Unit includes	Dimpled rubber mat and six tube securing bands

## Optional accessories

Cat. No	Description
15584130	Stacking tray assembly for open air rocker
15514140	Rubber mat

## Two year warranty

Certification: CE and cCSAus

# Wave motion shaker

The Fisherbrand wave motion shaker offers a smooth, 3D wave motion for precise shaking speed control.

## Applications

- Cell culture
- DNA/RNA extractions
- Genome sequencing
- Mixing blood samples
- Blotting techniques
- Staining and destaining gels
- Hybridisation

## Features

- Easy-to-adjust speed control with optimised low speed operation
- Easy-to-adjust tilt angle with a single set screw adjustment
- Operating temperature range of 5 to 40°C permits use in cold rooms or non-CO<sub>2</sub> incubators
- Continuous or timed operation with automatic switch-off
- Display will show last used settings, even after power has been turned off
- Quiet operation



## Specification and ordering information

Cat. No	15524070
Plug type(s)	EU, UK, CN
Electrical	100 to 240V, 0.2A, 12W, 50/60Hz
Speed range	5 to 120rpm
Speed accuracy	±1rpm
Carousel angle	0 to 12° adjustable
Timer	0 min. to 99h 59min.
Operation temperature	+5°C to 40°C
Display	LED
Maximum capacity	9.8kg
Tray dimensions (l x w)	306mm x 266mm
Overall dimensions (l x w x h)	415mm x 293mm x 209mm
Unit includes	Dimpled rubber mat and six tube securing bands

## Optional accessories

Cat. No	Description
15514140	Rubber mat

Two year warranty

Certification: CE and cCSAus

# Wrist shakers

Fisherbrand wrist shakers are available as either fixed speed or variable speed models and feature two side arms with adjustable clamps capable of holding eight flasks or bottles. The vigorous mixing action simulates hand shaking and eliminates wrist strain.



## Applications

- Ideal for shaker and suspension cell culture
- Media preparation
- Storage

## Features

*Fixed and variable speed models*

- Adjustable 1 to 15° mixing angle
- Adjustable side arm clamps can accommodate up to 8 flasks (500mL or smaller)
- Load capacity of up to 4.5kg with overload protection
- Designed to simulate the rotatory shaking motion of the human wrist
- Coldroom compatible (5 to 25°C)

*Variable speed model only*

- Continuous or timed operation with automatic switch-off from 0 to 99h 59min
- Display will show last used settings, even after power has been turned off
- Continue to run by last set speed and the remaining time when the power is recovered
- Audible and visual alarms when time reaches zero

**Two year warranty**

**Certification: CE and cCSAus**

## Specification and ordering information

Cat. No	15534070 (fixed speed)	15544070 (variable speed)
Electrical	200-240V, 50/60Hz	100-240V, 50/60Hz
Plug type(s)	EU, UK	EU, UK
Speed range	Fixed speed: 400rpm	Variable speed: 50 to 450rpm
Speed accuracy	±5%	±5%
Standard capacity	Up to 8 x 500mL flasks or tubes with neck/tube diameter 6.3mm to 51mm at 450rpm	
Maximum capacity	Up to 16 x 500mL flasks or tubes with neck/tube diameter 6.3mm to 51mm at 200rpm	
Timer	None	0min. to 99h 59min.
Load capacity	4.5kg	4.5kg
Display	No display	LED
Tilt angle	Adjustable 1 - 15° (accuracy ±1°)	
Dimensions (w x d x h)	425mm x 376mm x 413mm	
Total weight	50kg	50kg
Unit includes	Two four-position sidearm assemblies, EU & UK plugs	

## Optional accessories

Cat. No	Description	Pack qty
15534130	Two-position side arm assembly, includes shaft and one assembly with two clamps	2
15504130	Four-position side arm assembly, includes shaft and two assemblies each with two clamps	2
15514130	Six-position side arm assembly, includes shaft and three assemblies each with two clamps	2
15524130	Eight-position side arm assembly, includes shaft and four assemblies each with two clamps	2
15574130	230mm side arm shaft	2
15564130	350mm side arm shaft	2
15554130	470mm side arm shaft	2
16298420	Spare plastic clamp cover sheaths, pack (four long, two short)	1
15564120	Power cable EU plug	1
15574120	Power cable UK plug	1

Find out more at [eu.fishersci.com/go/fisherbrand](https://eu.fishersci.com/go/fisherbrand)

**Austria:** +43(0)800-20 88 40 **Belgium:** +32 (0)56 260 260 **Denmark:** +45 70 27 99 20  
**Germany:** +49 (0)2304 9325 **Ireland:** +353 (0)1 885 5854 **Italy:** +39 02 950 59 478  
**Finland:** +358 (0)9 8027 6280 **France:** +33 (0)3 88 67 14 14 **Netherlands:** +31 (0)20 487 70 00  
**Norway:** +47 22 95 59 59 **Portugal:** +351 21 425 33 50 **Spain:** +34 902 239 303  
**Sweden:** +46 31 352 32 00 **Switzerland:** +41 (0)56 618 41 11 **UK:** +44 (0)1509 555 500

© 2019 Thermo Fisher Scientific Inc. All rights reserved.  
Trademarks used are owned as indicated at [fishersci.com/trademarks](https://fishersci.com/trademarks).

13617\_EN

