

# Verti-Gel Maxi System

## Typical Applications:

First and second dimension SDS-PAGE, native, preparative, gradient and high resolution electrophoresis and electroblotting

- Injection moulded construction, durable & leakproof
- Designed for large format, 200mm x 200mm gels
- Interchangeable modules for IEF/2D electrophoresis and electroblotting in a single tank
- Rapid gel casting and loading
- Run two gels simultaneously
- Bonded spacers and combs colour coded for thickness
- Widest selection of combs allow separation of up to 192 samples



### Technical Specification

No. of gels.....	1 to 2
Handcast gels .....	Using 200mm x 200mm Verti-Gel Maxi glass plates and combs
Plate dimensions (w x h x t), mm .....	200 x 200 x 4
Standard spacer dimensions (w x h), mm.....	20 x 200
IPG spacer dimensions (w x h), mm.....	6 x 200
Total volume inner buffer chamber, mL .....	640
Total buffer volume for two gels, L.....	5.3
Standard run time for SDS-PAGE	
Without cooling, hrs.....	4 to 5
With cooling, hrs.....	3 to 4
Unit dimensions (w x d x h), mm.....	300 x 180 x 270
Mass, kg.....	2.5

Featuring the new innovative screw-clamp technology within the PAGE insert, only four screws are now needed to secure the 200mm x 200mm glass plates. This gives the Verti-Gel Maxi a selective advantage of a much faster set up speed. In addition, this new clamping technology ensures that pressure is distributed evenly along the height of the gel rather than in the centre, eliminating plate bowing and gel compression. The Fisherbrand Verti-Gel maintains a leak-proof seal during casting and the ergonomic design of the PAGE insert aids both handling and set up making it easy and quick to use.

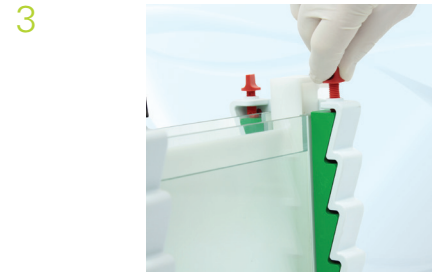
# Leak Free Casting with Vertical Screw-Pin Technology



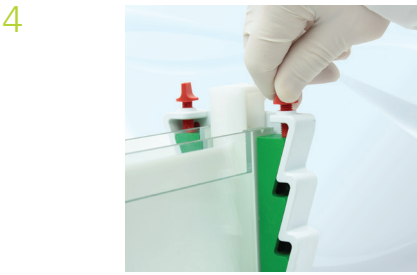
Assemble each gel cassette on a flat level surface, by placing the plain glass plate down with the spacers facing upwards followed by the notched glass plate.  
**Benefit:** Colour coded spacers consistent with comb thickness are bonded to ground glass plates to ensure correct alignment and leak free casting.



Loosen the vertical screw-pins in the PAGE insert to release the locking mechanism, allowing the gel clamps to sit in the resting slots.



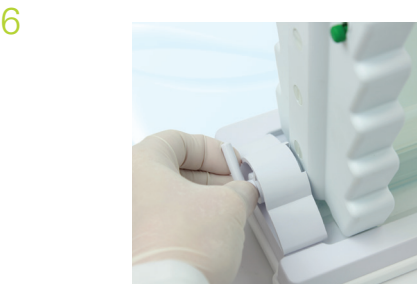
Insert a gel cassette into each side of the inner buffer chamber in the PAGE insert, and begin tightening the vertical screw-pins.



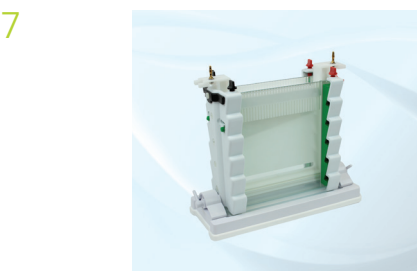
Continue to tighten the screw-pins until the gel clamps glide out of the resting slots and fix firmly against the glass plates pushing them upright.



Check the bottom of the glass plates to ensure that they are flush together, and place the PAGE insert on the casting base; make sure that the cams are facing downwards.  
**Benefit:** Dual purpose PAGE insert eliminates time consuming transfer of glass plates between separate casting and running modules.



Insert cams and turn until tightened, drawing the PAGE insert onto the casting to form a leak proof seal.  
**Benefit:** Ultra soft silicone mat within cam-caster to ensure leak free casting.



Pour in the gel solution, insert the combs and allow the wells to polymerise.



Transfer the PAGE insert to the gel tank. Fill the inner and outer buffer chambers before loading samples.



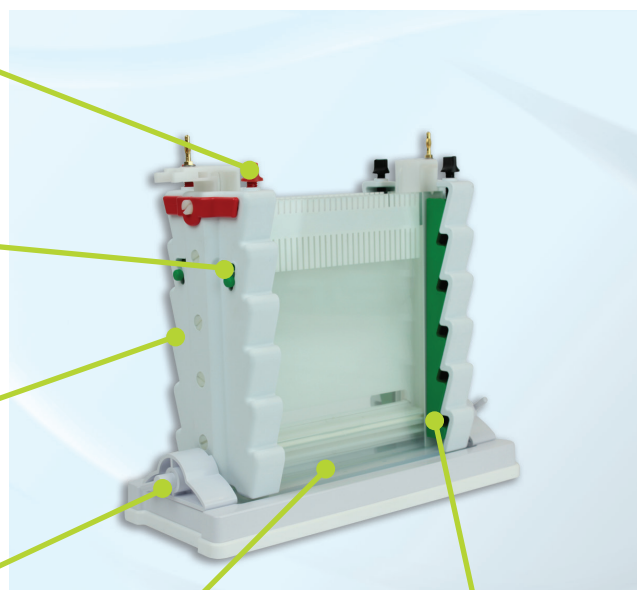
Replace the lid, connect to the power supply and run.

Vertical screw-pins, colour coded to prevent polarity reversal, push gel clamps out of the resting slots to secure glass plates firmly within the PAGE insert.

Resting slots allow the gel clamps to sit conveniently out of the way, to aid hinderance free loading of the cassettes into the PAGE insert.

Ergonomic 'wave' design of PAGE insert provides convenient finger grips for easy handling.

Cam-pins lock PAGE insert onto the ultra soft silicone mat within the casting base to provide leak free seal.



Flat, level gasket prevents current leakage from inner buffer chamber.

Sliding gel clamps available in two thicknesses to accommodate single and double gel cassettes.

# Verti-Gel Maxi, 2-Gel System (Standard)

## Technical Specification

Capacity .....	48 samples per gel
No. of samples .....	1, 5, 10, 18MC, 24, 30, 36MC, 48
Thickness, mm .....	0.5, 1.0, 1.5, 2.0

MC = Multichannel pipettor compatible

Cat. No	Description
<b>12623546</b>	Verti-Gel Maxi Dual PAGE System 200mm x 200mm, cooling coil & caster, 2x plain glass plates with 1mm bonded spacers, 2x notched glass plates, 2x 24 sample combs (1mm)
<b>15126644</b>	Verti-Gel Maxi Dual electroblotting system, 200mm x 200mm, with cooling coil and caster, 2x plain glass plates with 1mm bonded spacers, 2x notched glass plate, 2x 24 sample combs (1mm)



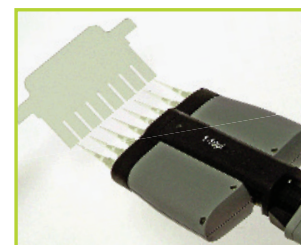
## Versatility and Adaptability

- **More gels:** run two gels simultaneously on the standard two Gel Verti-Maxi System
- **Customise your system:** for second-dimension runs with 180mm IPG strips and gels using the IEF conversion kit (Cat. No 15116634)
- **Utilise modular inserts:** with the same universal tank and lid to extend the application of your standard Vert-Gel Maxi unit to create a complete 2D or blotting system:
  - (1) - Cat. No 15186634 with capillary tube gel insert for 2D electrophoresis
  - (2) - Cat. No 15106644 for two gel electroblotting

# Combs & Accessories

## Extensive range of combs

- Options for sample prep
- Options for multi-channel pipettor compatible
- The number of samples can be maximised using high tooth number combs
- Four thicknesses, colour coded:
  - **black** 0.75mm for ultra resolved bands
  - **white** 1mm supplied as standard
  - **red** 1.5mm for maximising sample volume
  - **blue** 2mm for maximising sample volume



Combs	Thickness 0.75mm		Thickness 1.0mm		Thickness 1.5mm		Thickness 2.00mm	
	Cat. No	Sample size, $\mu\text{L}$	Cat. No	Sample size, $\mu\text{L}$	Cat. No	Sample size, $\mu\text{L}$	Cat. No	Sample size, $\mu\text{L}$
1 prep, 1 marker	<b>11807813</b>	1,100	<b>11857813</b>	1,500	<b>11867813</b>	2,200	<b>11877813</b>	3,000
5 sample	<b>11887833</b>	160	<b>11897833</b>	200	<b>11807843</b>	320	<b>11817843</b>	400
10 sample	<b>11817813</b>	80	<b>11827813</b>	100	<b>11837813</b>	160	<b>11847813</b>	200
18 sample MC	<b>11887813</b>	40	<b>11897813</b>	50	<b>11807823</b>	80	<b>11817823</b>	100
24 sample	<b>11827823</b>	30	<b>11837823</b>	40	<b>11847823</b>	60	<b>11857823</b>	80
30 sample	<b>11867823</b>	25	<b>11877823</b>	35	<b>11887823</b>	50	<b>11897823</b>	70
36 sample MC	<b>11807833</b>	20	<b>11817833</b>	25	<b>11827833</b>	40	<b>11837833</b>	50
48 sample	<b>11847833</b>	15	<b>11857833</b>	20	<b>11867833</b>	30	<b>11877833</b>	40

## Accessories

Cat. No	Description	Pack qty
<b>Accessories - General</b>		
15166624	Verti-Gel Maxi external casting stand	1
15196624	Verti-Gel Maxi page insert	1
15106634	Detachable cooling coil, Verti-Gel Maxi	1
15186624	Verti-Gel Maxi casting base	1
11864672	Replacement rubber mat for 200mm caster	2
15126634	Tank, Verti-Gel Maxi	2
15136634	Verti-Gel Maxi lid (no cables)	2
15146634	Electrophoresis cable (black & red)	2
11884532	Plain glass plates	2
11894532	Plain plates 0.75mm spacers	2
11804542	Plain plates 1mm spacers	2
11814542	Plain plates 1.5mm spacers	2
11824542	Plain plates 2mm spacers	2
11854532	Notched plates	2
11864532	Notched plates 0.75mm spacers	2
11874532	Notched plates 1mm spacers	2
11854502	Dummy plate, 200mm x 200mm	1
11884502	Maxi cooling block	2
11834542	Spacers, 200mm x 0.75mm thick	2
11844542	Spacers, 200mm x 1mm thick	2
11854542	Spacers, 200mm x 1.5mm thick	2
11864542	Spacers, 200mm x 2mm thick	2
11887803	Replacement platinum wire 1m x 0.2mm	1
<b>Accessories - Blotting</b>		
15106644	Maxi blotting module, Verti-Gel Maxi	1
12348007	Maxi blotting cassette, Verti-Gel Maxi	1
12358007	Maxi fibre pad	1
15116644	Maxi high intensity blotting module, Verti-Gel Maxi	1
<b>Accessories - 2D Electrophoresis</b>		
15186634	Maxi tube gel module, Verti-Gel Maxi	1
15116634	IEF conversion kit for Verti-Gel Maxi	1
15196634	Mini capillary tubes	10
11867653	Maxi capillary blanking ports	10

Don't forget your power supplies! Visit  
[www.eu.fishersci.com/fisherbrand](http://www.eu.fishersci.com/fisherbrand)



**Terms and Conditions** Please note that all sales are subject to our standard terms and conditions. Full details can be found on the inside back cover of our catalogues or visit our website [www.fisher.co.uk](http://www.fisher.co.uk)

Austria: +43(0)800-20 88 40 Belgium: +32 (0)56 260 260 Denmark: +45 70 27 99 20  
 Germany: +49 2304 932-5 Ireland: +353 (0)1 885 5854 Italy: +39 02 950 59 478  
 Finland: +358 (0)9 8027 6280 France: +33 (0)3 88 67 14 14 Netherlands: +31 (0)20 487 70 00  
 Norway: +47 22 95 59 59 Portugal: +351 21 425 33 50 Spain: +34 902 239 303

 **Fisher  
Scientific**

A Thermo Fisher Scientific Brand